

Current Flow Diagram Type 928 USA Model 82

PART I	POWER SUPPLY, STARTER IGNITION FUEL PUMP
PART II	FUEL INJECTION SYSTEM
PART III	IGNITION/STARTER SWITCH, LIGHT SWITCH HEADLIGHT
PART IV	HEADLIGHT, PARKING LIGHT FOG LIGHT, LICENSE PLATE LIGHT FRONT TURN SIGNAL HAZARD FLASHER
PART V	REAR LIGHTS, LAMP CONTROL UNIT WINDSHIELD WIPER
PART VI	WASHER PUMPS REAR WINDOW WIPER REAR WINDOW DEFOGGER INTERIOR LIGHT CENTRAL LOCKING SYSTEM
PART VII	DOOR LIGHT SEAT BELT OUTSIDE MIRROR POWER WINDOWS BRAKE PADS
PART VIII	AUTOMATIC AIR CONDITIONER
PART IX	AUTOMATIC AIR CONDITIONER SENDER UNITS
PART X	CENTRAL WARNING UNIT, INSTRUMENT CLUSTER
PART XI	CLOCK CIGARETTE LIGHTER TEMPSTAT (CRUISE CONTROL) HORNS

Current Flow Diagram

Type 928 USA Model 82

WIRE CONNECTORS

T1 - ONE-POLE

- A - NEAR TURN SIGNAL LEFT
- B - NEAR TURN SIGNAL RIGHT
- C - NEAR AC-COMPRESSOR
- F - NEAR FRESH AIR BLOWER
- G - NEAR GLOVE COMPARTMENT
- H - NEAR FUSE/RELAY BOARD
- I - IN TUNNEL
- K - NEAR FUEL PUMP

T2 - TWO-POLE

- A - BEHIND ACCELERATOR PEDAL
- C - BEHIND REAR BUMPER
- D - NEAR LEFT BACKWHEEL
- E - NEAR RIGHT BACKWHEEL
- F - NEAR RIGHT FRONT WHEEL
- G - NEAR LEFT FRONT WHEEL
- H - NEAR DRIVER SEAT
- I - NEAR PASSENGER SEAT
- K - NEAR DRIVER SEAT
- Q - NEAR LEFT FOG LIGHT
- R - NEAR RIGHT FOG LIGHT
- U - NEAR LEFT SIDE MARKER
- V - NEAR RIGHT SIDE MARKER

T4 - FOUR-POLE

- A - IN SPARE WHEEL WELL
- B - IN CONSOLE, RIGHT
- C - IN CONSOLE RIGHT
- D - IN CONSOLE
- E - IN CONSOLE
- F - IN CONSOLE
- G - NEAR RIGHT FRONT WHEEL
- H - NEAR LEFT FRONT WHEEL

T6 - SIX-POLE

- A - BEHIND SIDE COVERING, RIGHT
- B - IN REAR LID, RIGHT
- C - IN SPARE WHEEL WELL
- D - IN CONSOLE

T7 - SEVEN-POLE

- A - BEHIND LUGGAGE COMPARTMENT COVERING LEFT
- B - BEHIND LUGGAGE COMPARTMENT COVERING RIGHT

T14 - FOURTEEN-POLE

IN ENGINE COMPARTMENT, RIGHT

T18 - EIGHTEEN-POLE

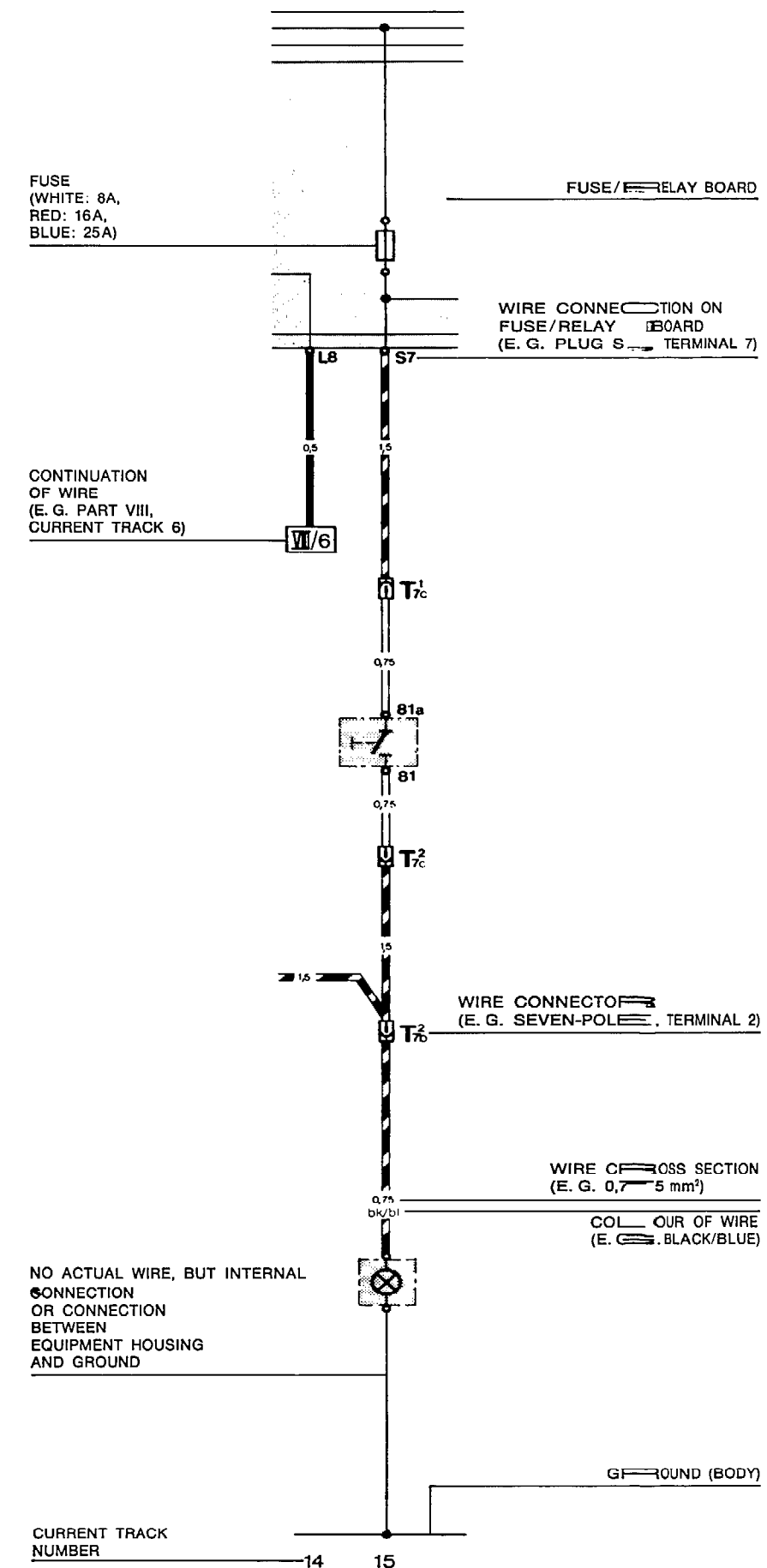
- A - IN FOOT WELL, DRIVER SIDE
- B - IN FOOT WELL, PASSENGER SIDE

GROUND TERMINALS

- ① ON FRONT LOCK MEMBER, RIGHT
- ② AT REAR OF WHEEL ARCH UNDERNEATH RIGHT REAR TRIM PANEL
- ③ ON STEERING CONSOLE
- ④ ON FRONT LOCK MEMBER, LEFT
- ⑤ ON UPPER MOUNTING FOR FUSE/RELAY BOARD
- ⑥ ON FRONT WALL

WIRE COLOURS

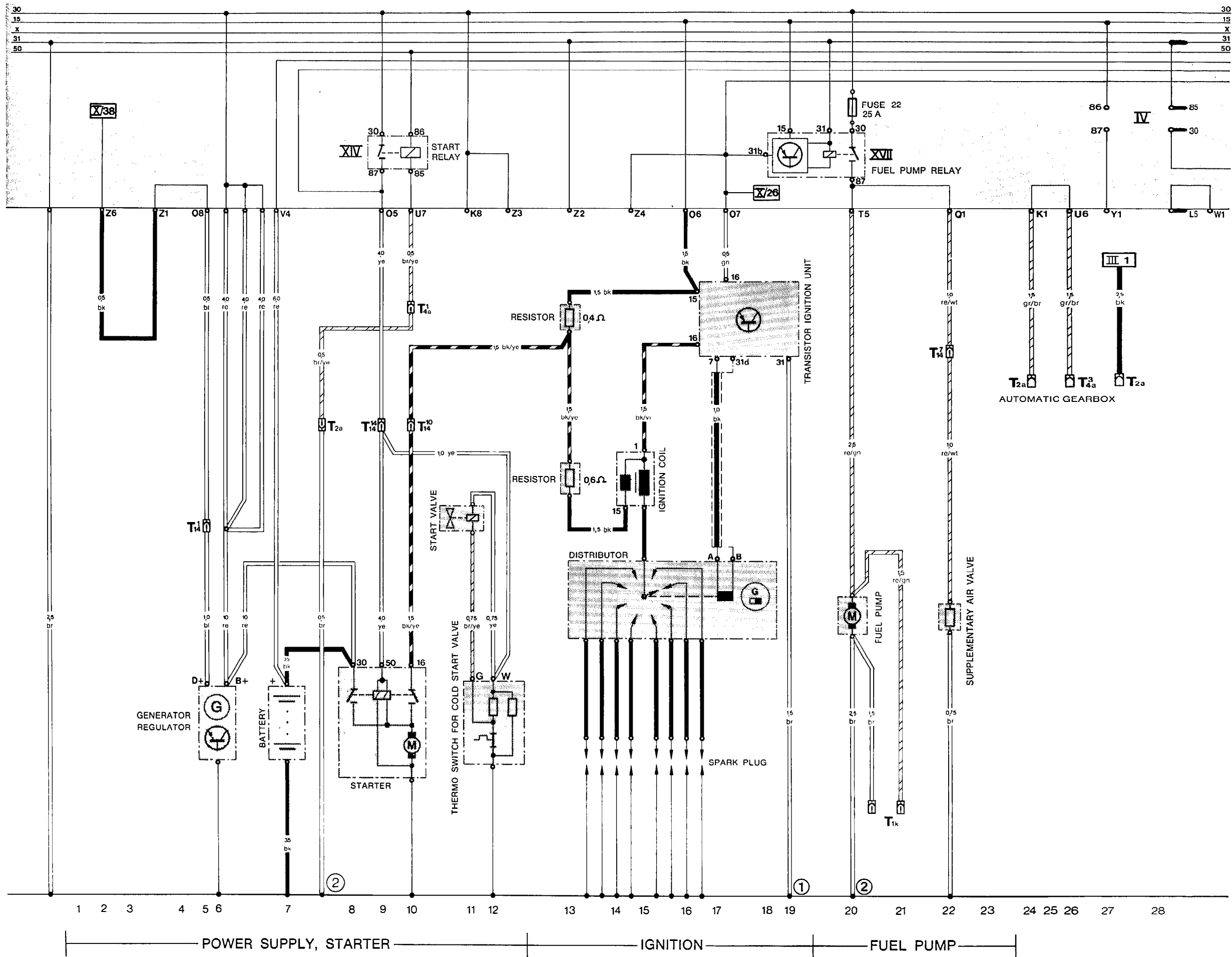
- | | | |
|------------|-------------|-------------|
| BK - BLACK | GN - GREEN | BR - BROWN |
| WT - WHITE | YE - YELLOW | BL - BLUE |
| RE - RED | GR - GREY | VI - VIOLET |



Current Flow Diagram Type 928 USA Model 82 Part I

POWER SUPPLY, STARTER
IGNITION
FUEL PUMP

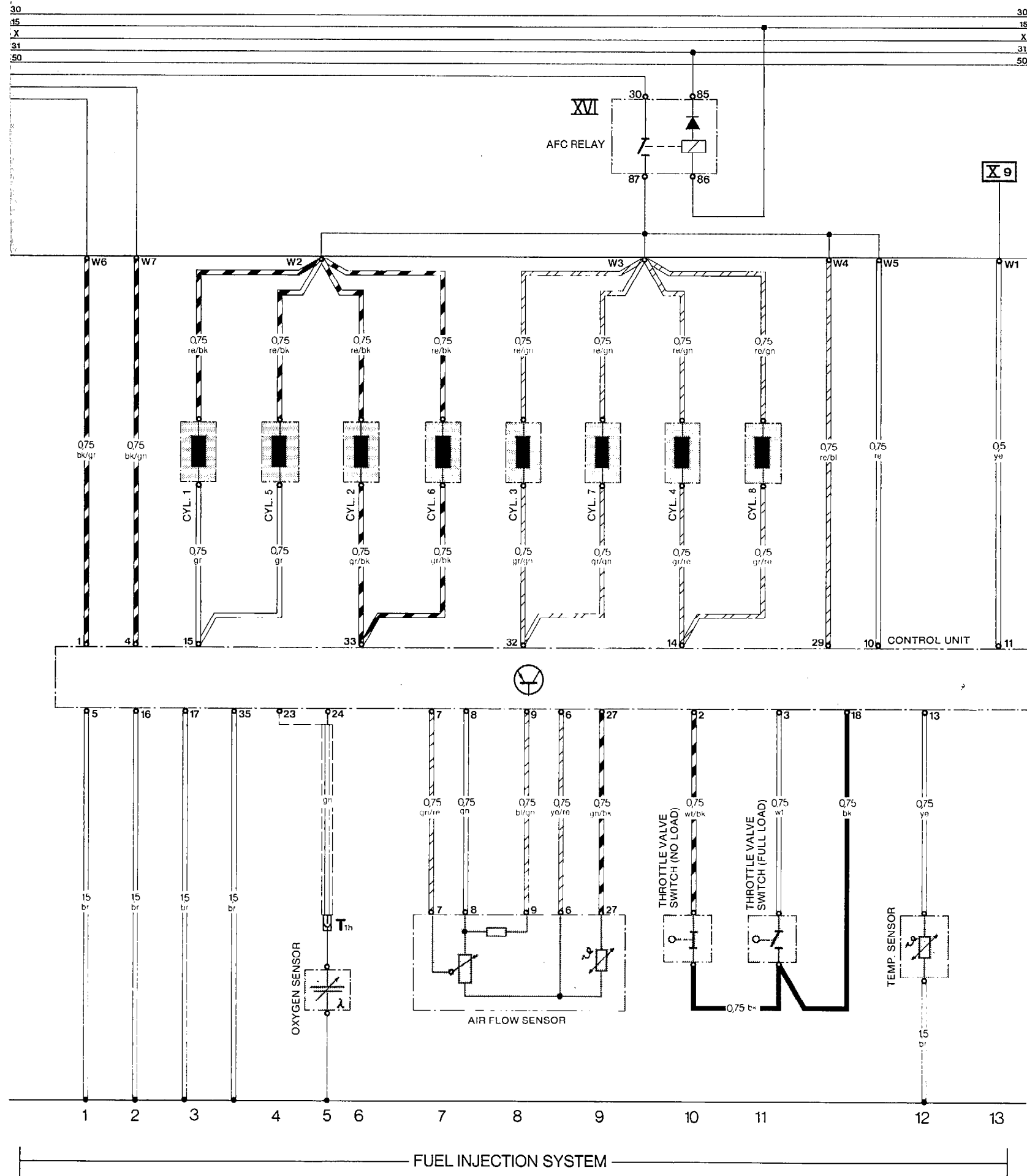
Current Flow Diagram Type 928 USA Model 82 Part I



Current Flow Diagram Type 928 USA Model 82 Part II

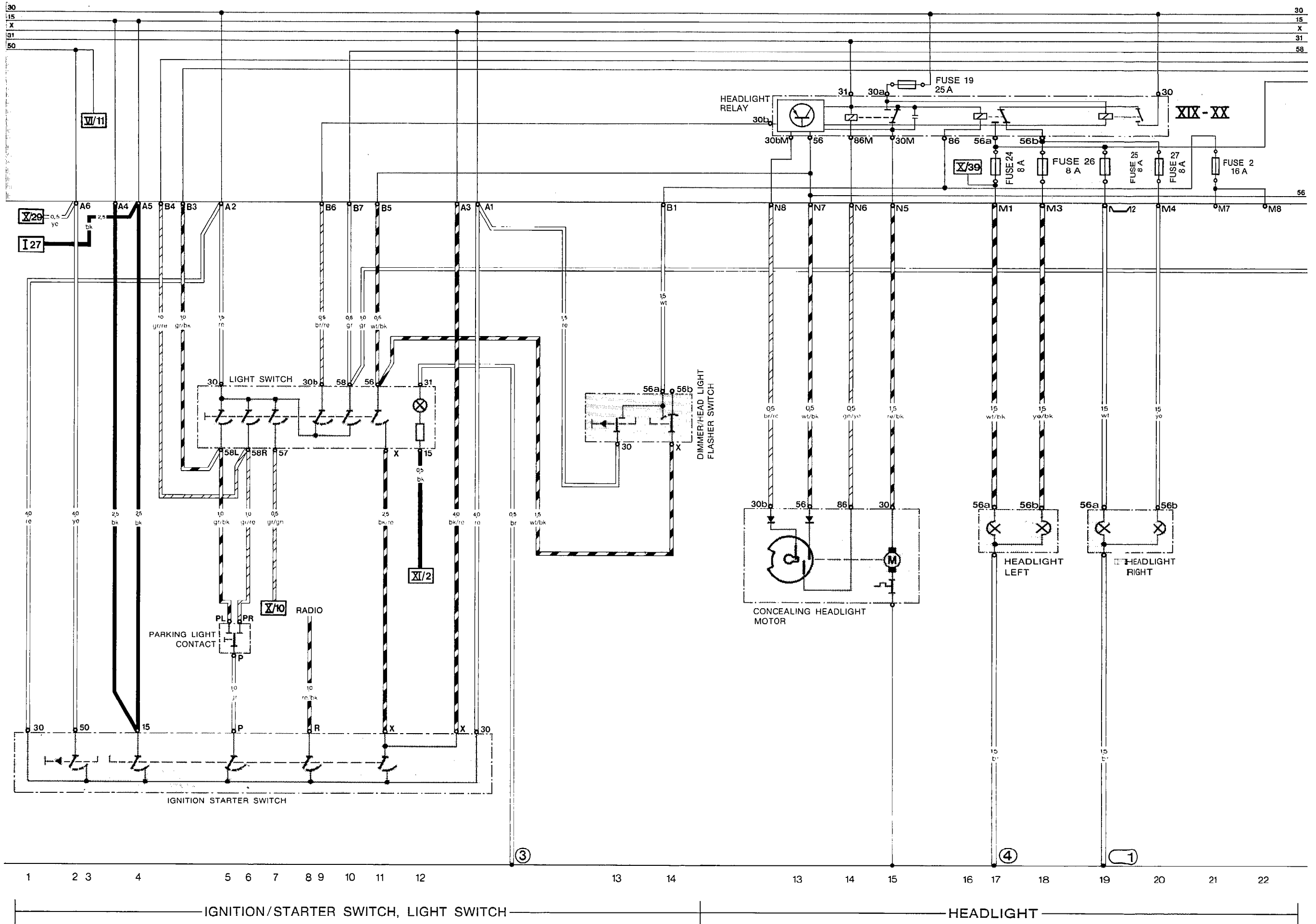
FUEL INJECTION SYSTEM

Current Flow Diagram Type 928 USA Model 82 Part II



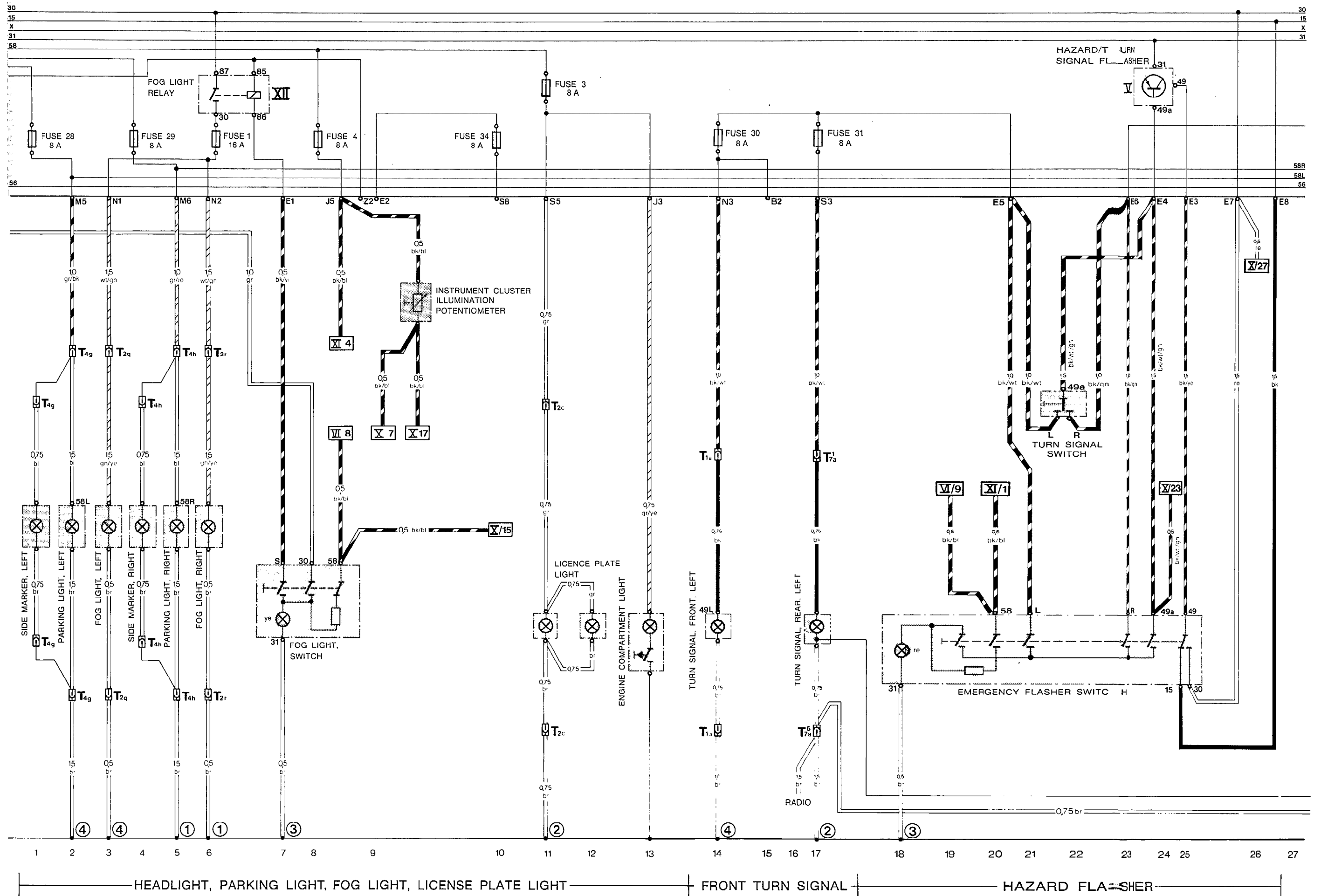
Current Flow Diagram Type 928 USA Model 82 Part III

IGNITION/STARTER SWITCH, LIGHT SWITCH
HEADLIGHT, PARKING LIGHT



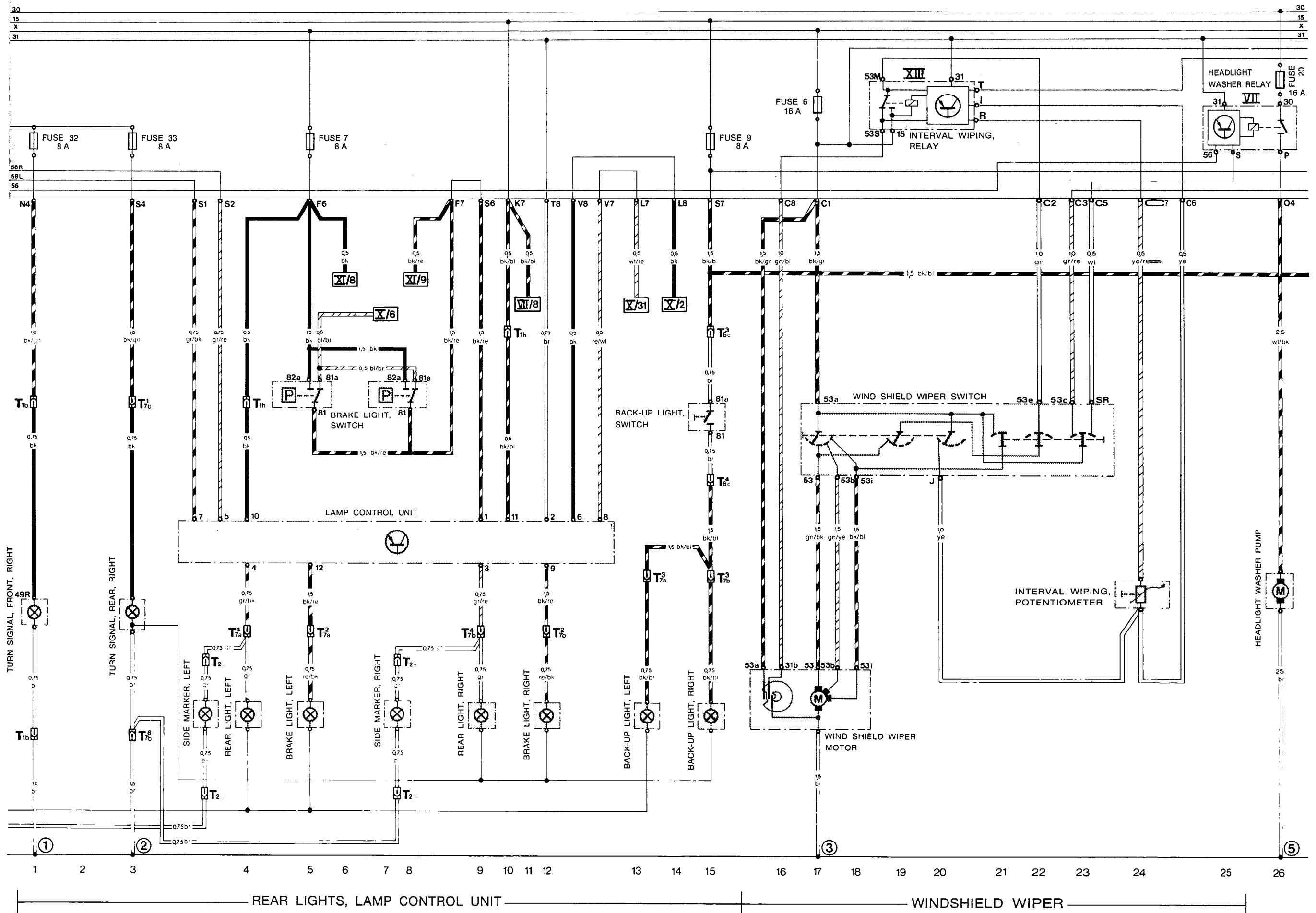
Current Flow Diagram Type 928 USA Model 82 Part IV

FOG LIGHT, LICENSE PLATE LIGHT
FRONT TURN SIGNAL
HAZARD FLASHER



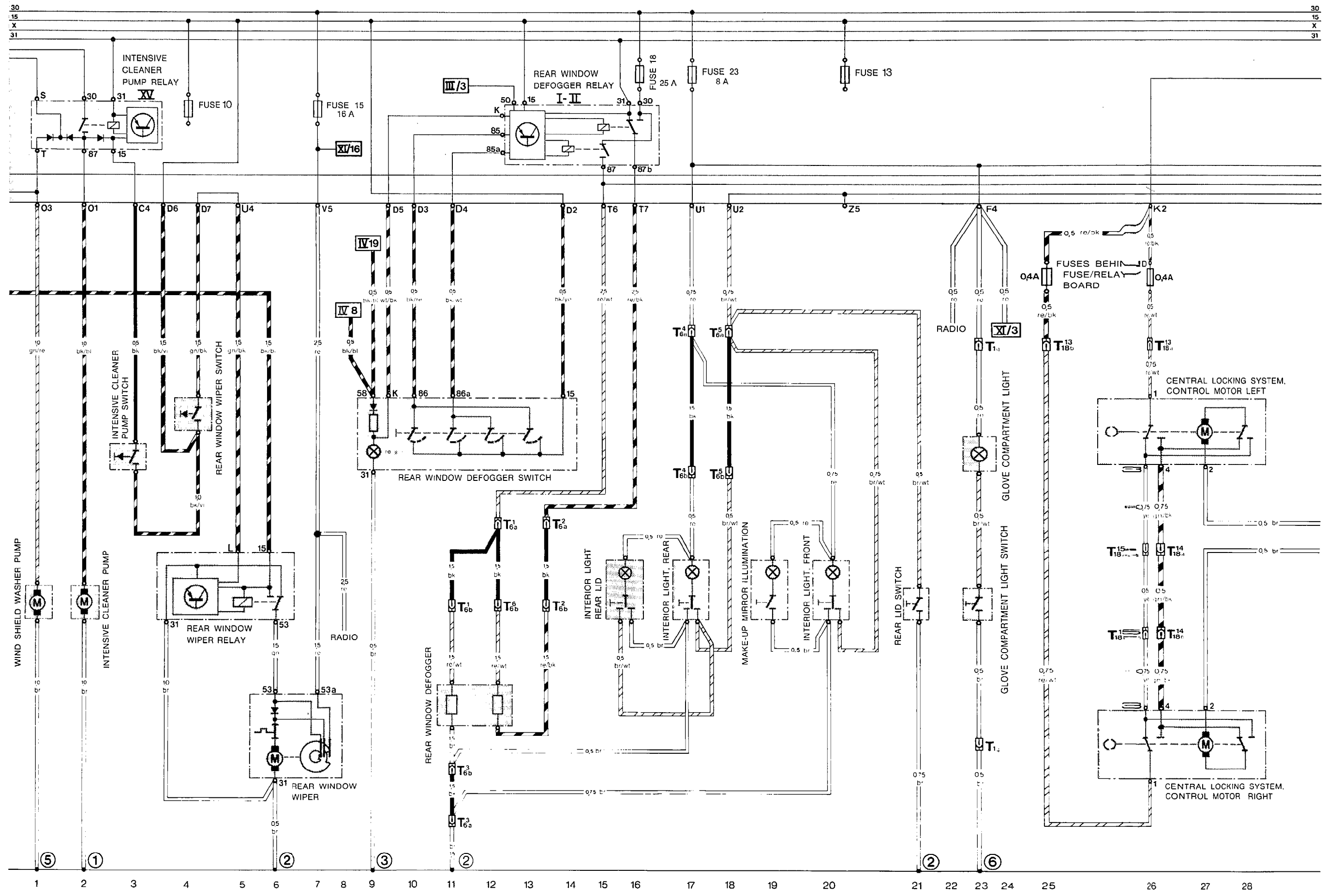
Current Flow Diagram Type 928 USA Model 82 Part V

REAR LIGHTS, LAMP CONTROL UNIT
WINDSHIELD WIPER



Current Flow Diagram Type 928 USA Model 82 Part VI

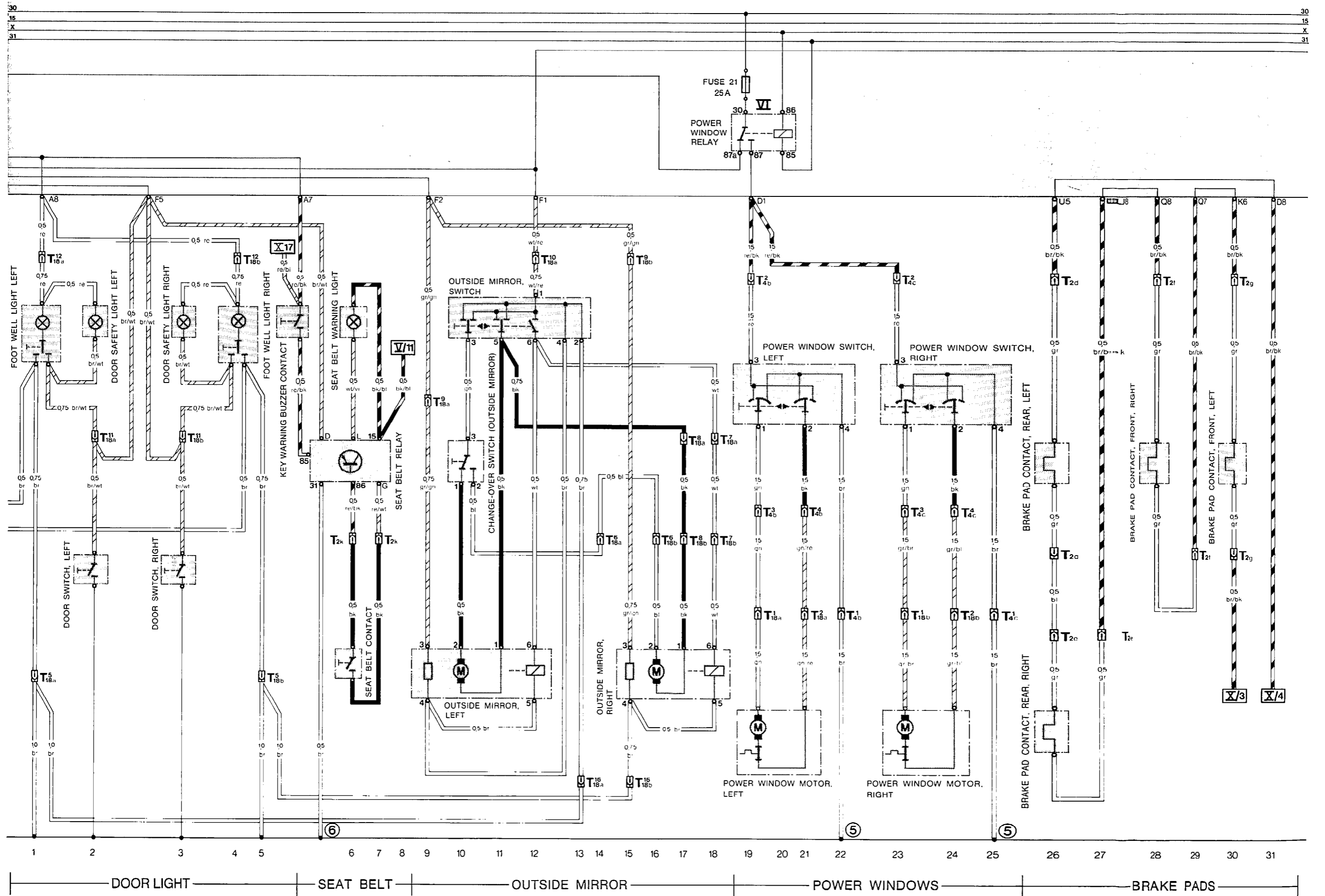
WASHER PUMPS
REAR WINDOW WIPER
REAR WINDOW DEFOGGER
INTERIOR LIGHT
SEAT BELT



WASHER PUMPS | REAR WINDOW WIPER | REAR WINDOW DEFOGGER | INTERIOR LIGHT | CENTRAL LOCKING SYSTEM

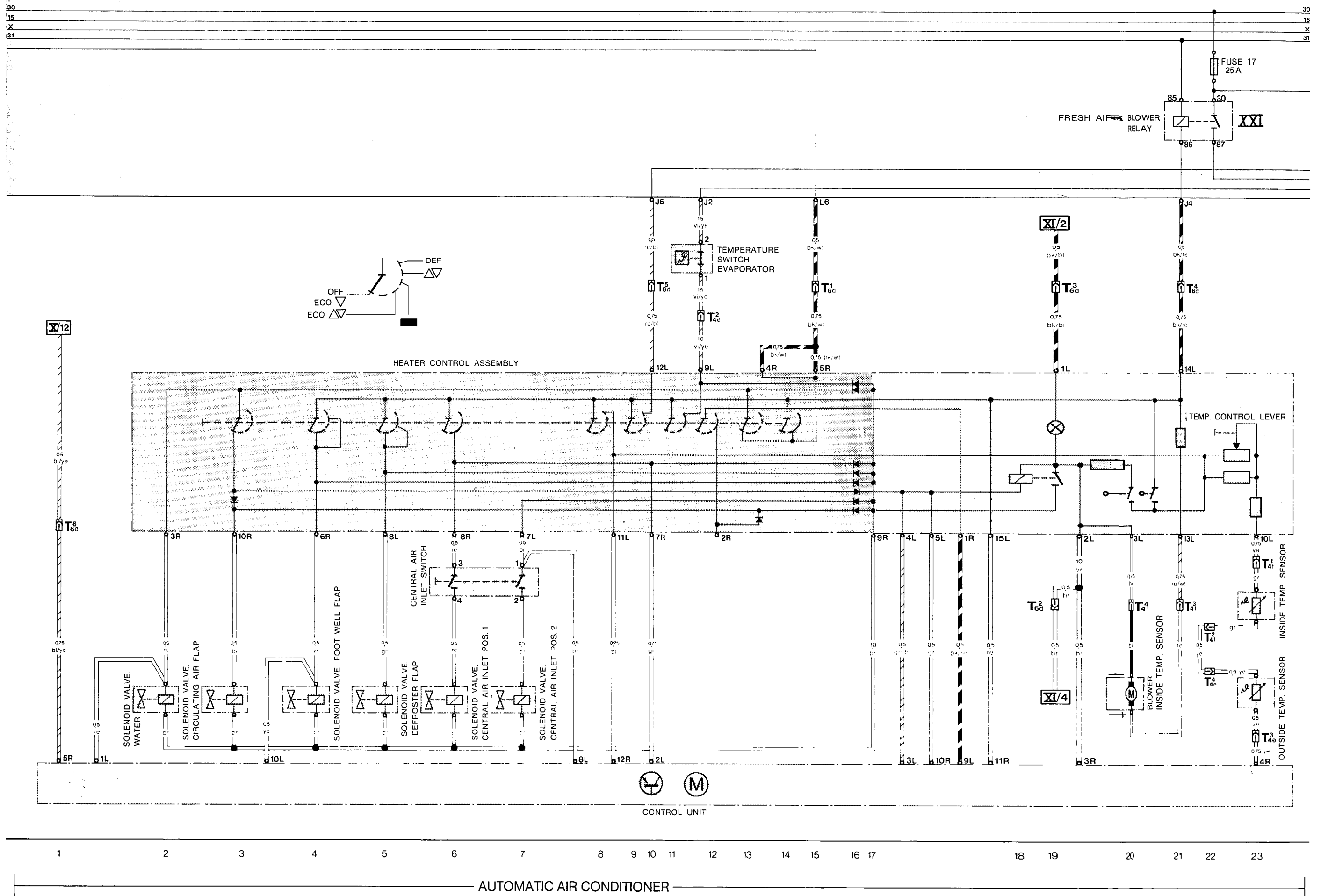
Current Flow Diagram Type 928 USA Model 82 Part VI

DOOR LIGHT
SEAT BELT
OUTSIDE MIRROR
POWER WINDOWS
BRAKE PADS



Current Flow Diagram Type 928 USA Model 82 Part VIII

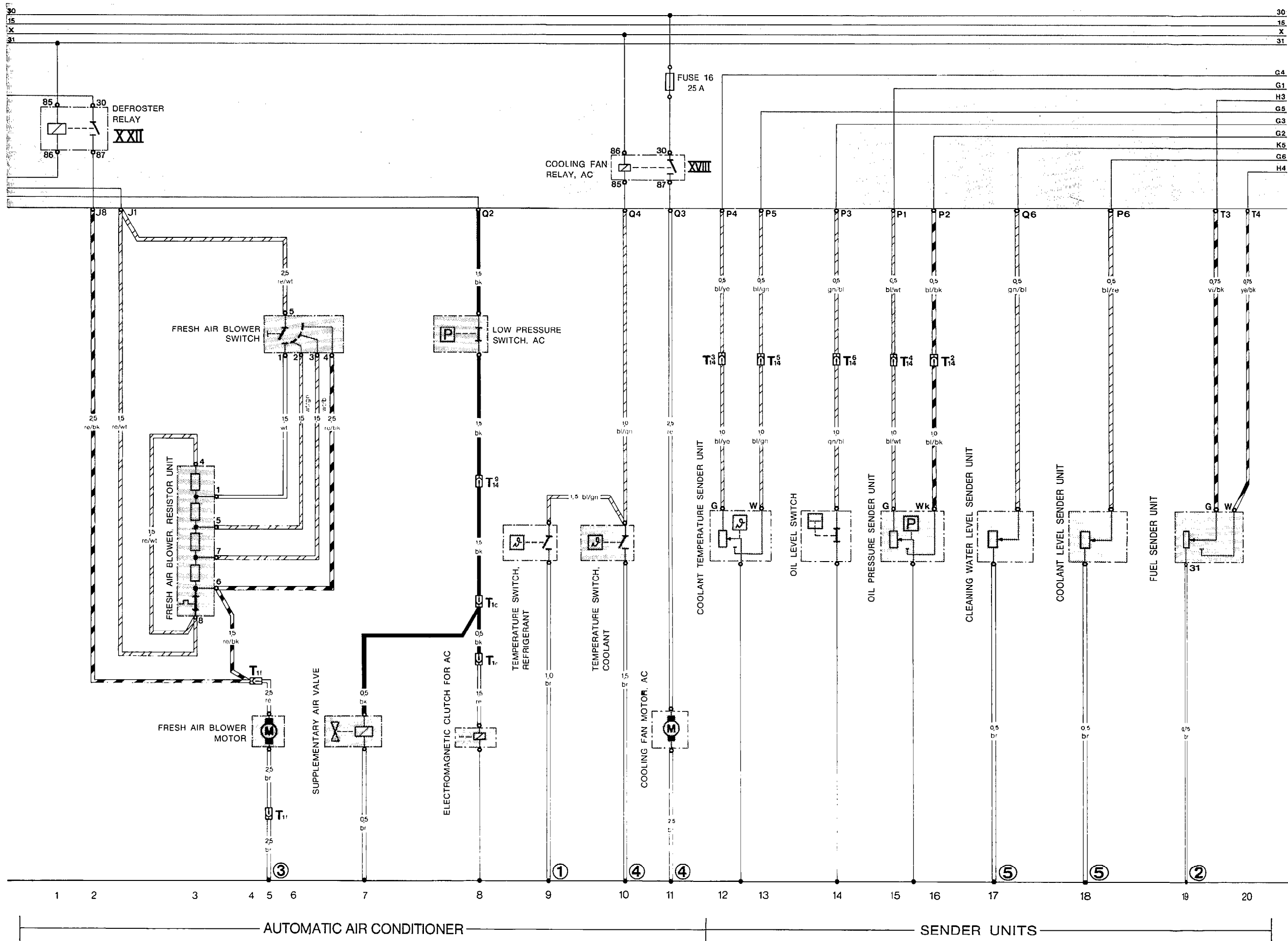
AUTOMATIC AIR CONDITIONER



Current Flow Diagram Type 928 USA Model 82 Part IX

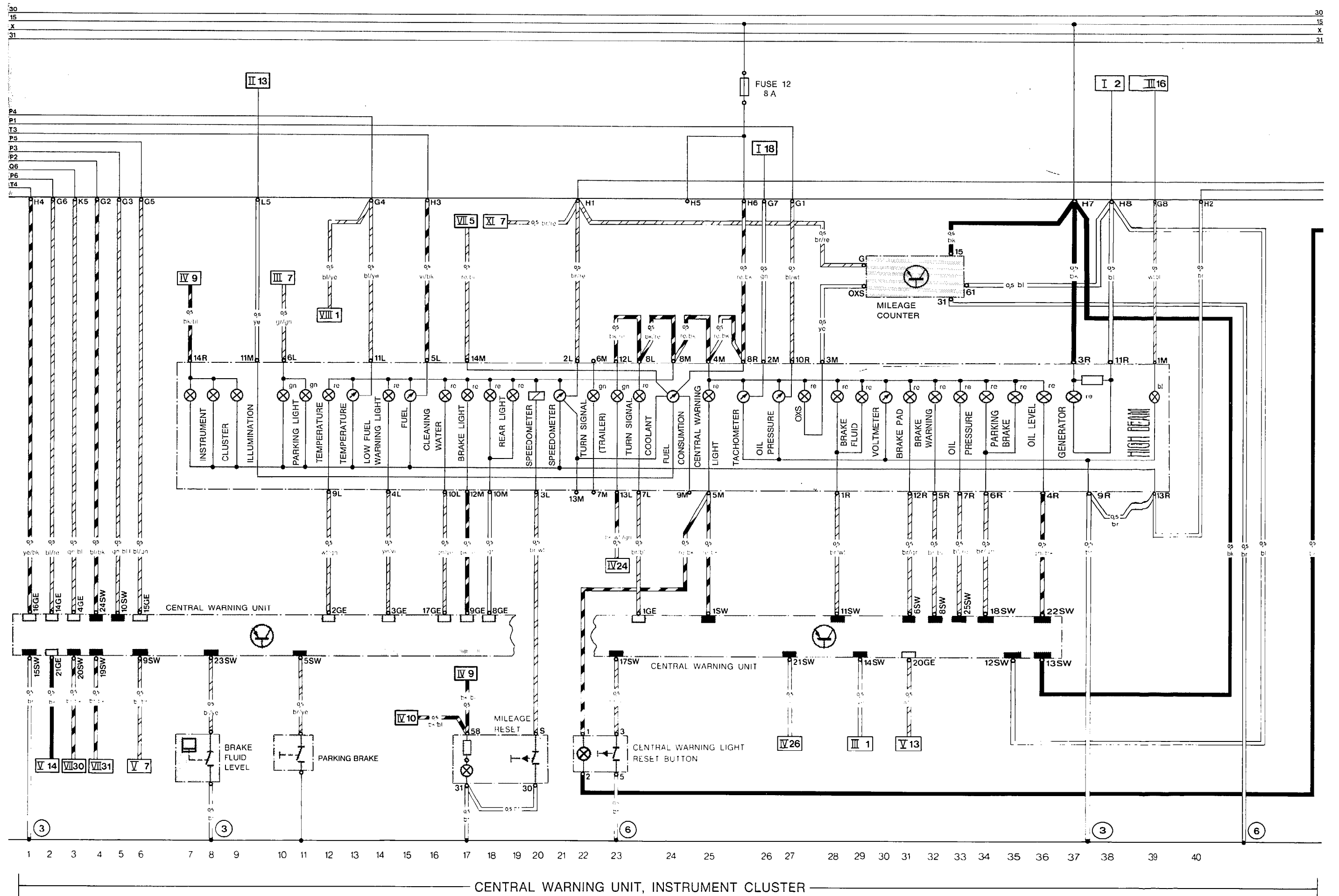
AUTOMATIC AIR CONDITIONER
SENDER UNITS

Current Flow Diagram Type 928 USA Model 82 Part IX



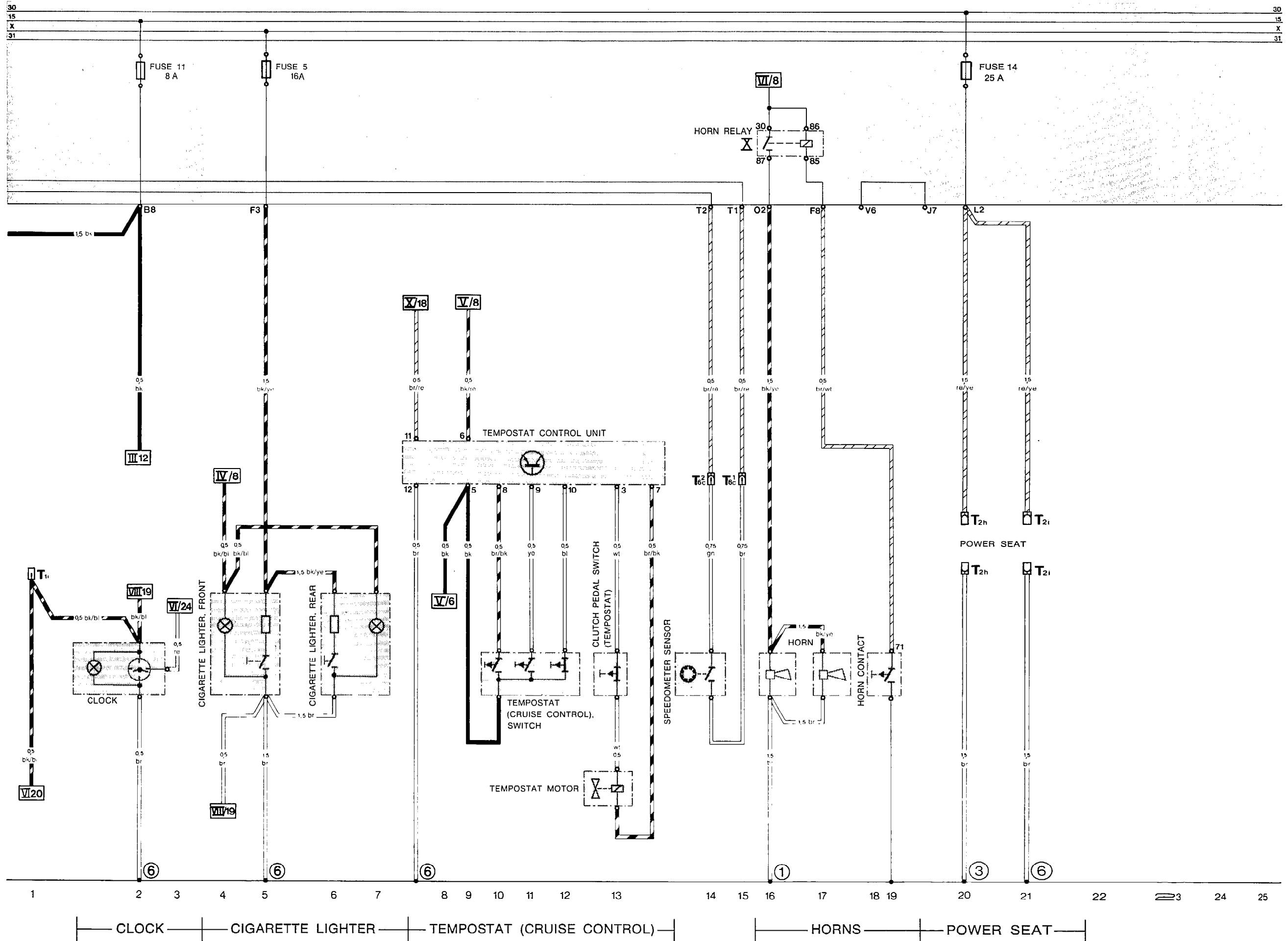
Current Flow Diagram Type 928 USA Model 82 Part X

CENTRAL WARNING UNIT, INSTRUMENT CLUSTER



Current Flow Diagram Type 928 USA Model 82 Part XI

CLOCK
CIGARETTE LIGHTER
TEMPERATURE (CRUISE CONTROL)
HORNS
POWER SEAT

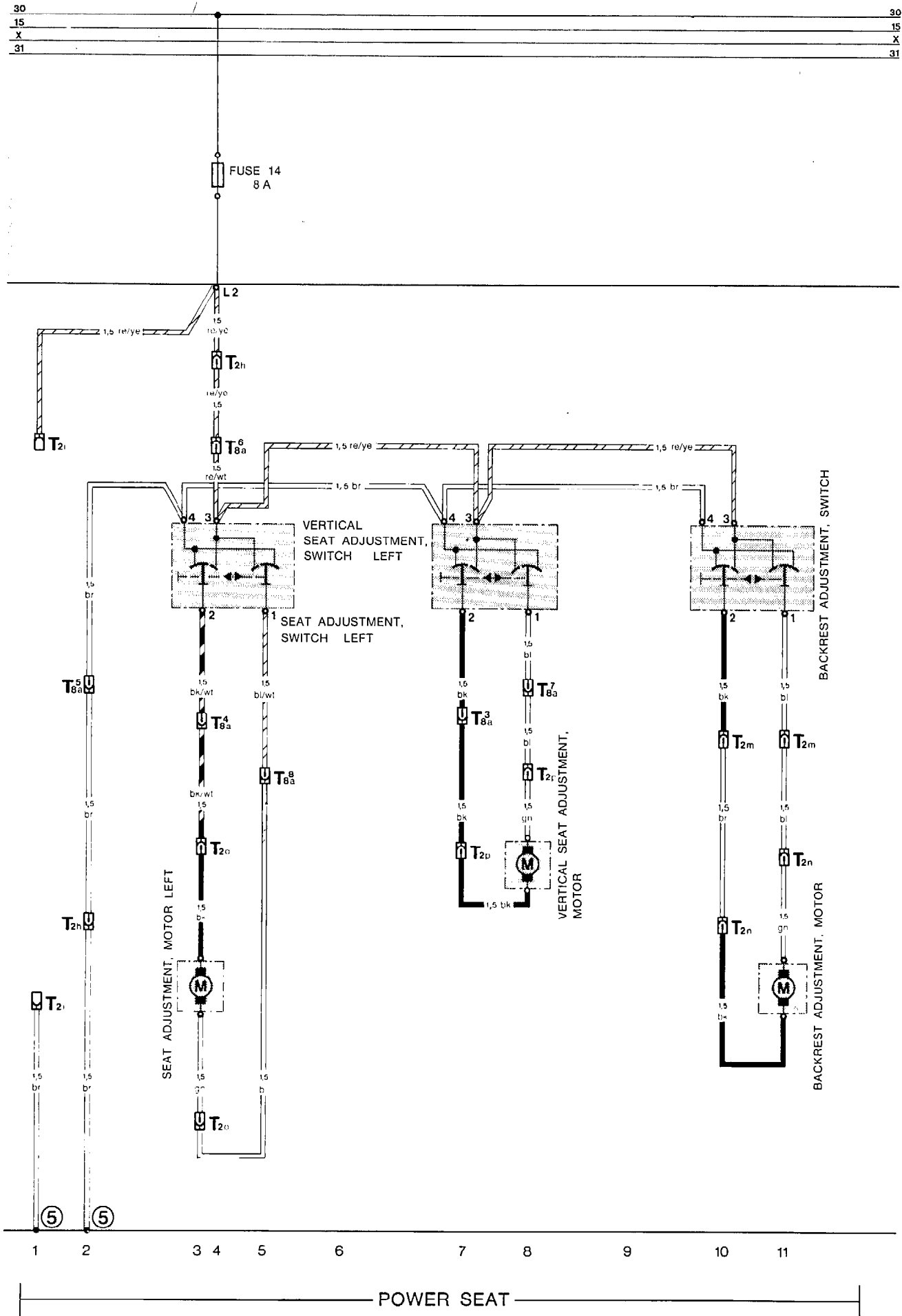


Additional Current Flow Diagram Type 928 USA Model 82

97

Power seat

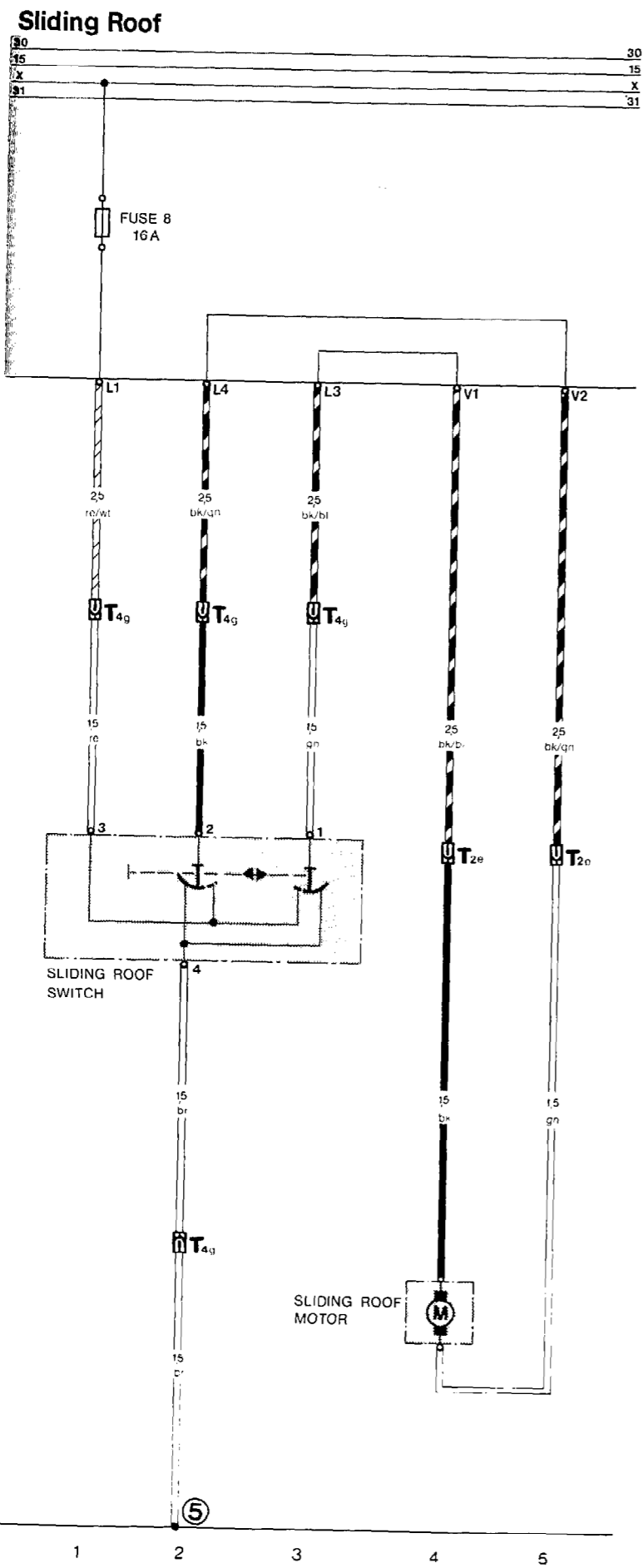
Wiring



Additional Current Flow Diagram Type 928 USA Model 82

97

Wiring



SLIDING ROOF (OPTIONAL)

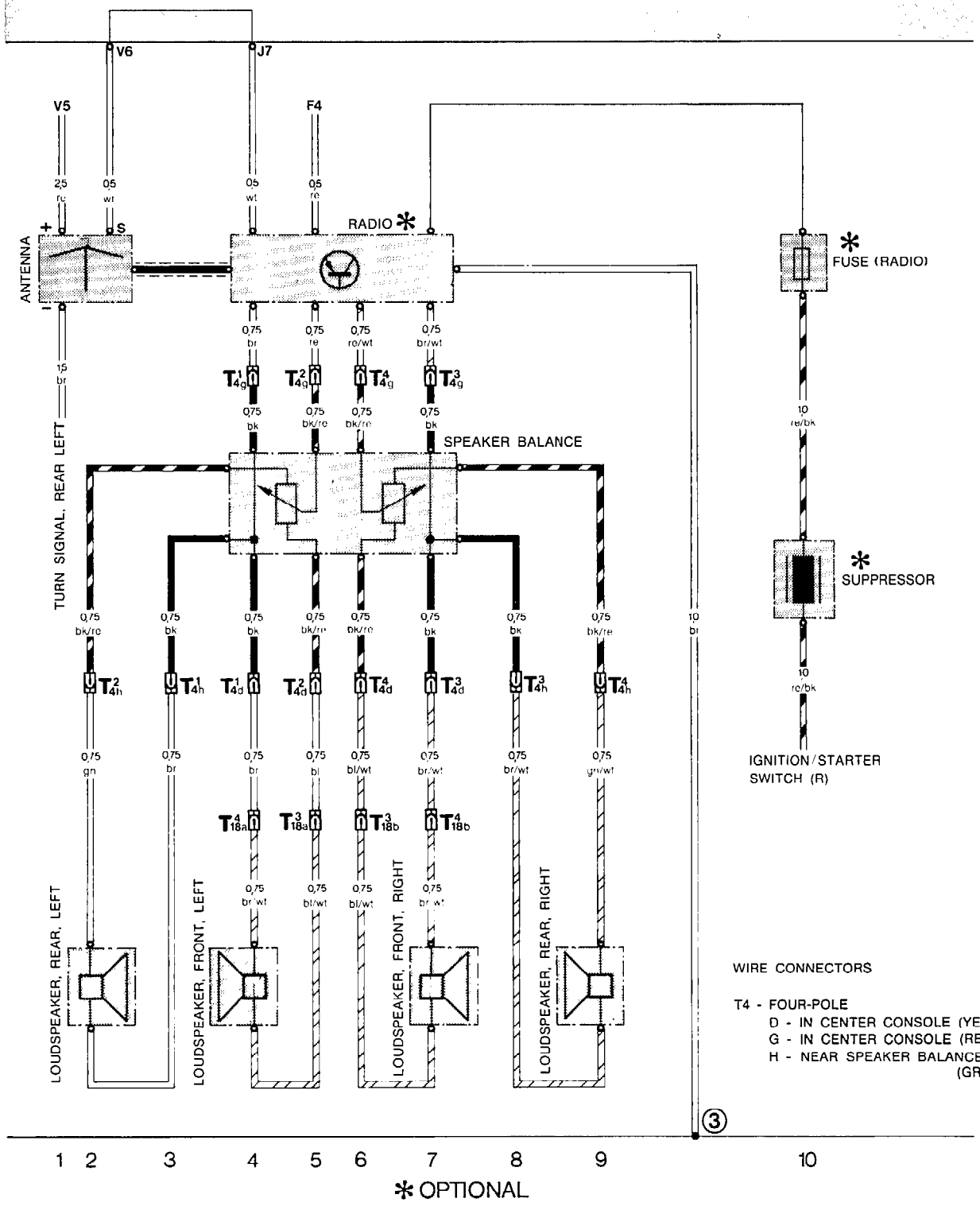
Additional Current Flow Diagram

97

Type 928 USA Model 82 RADIO

Wiring

30	30
15	15
X	X
31	31

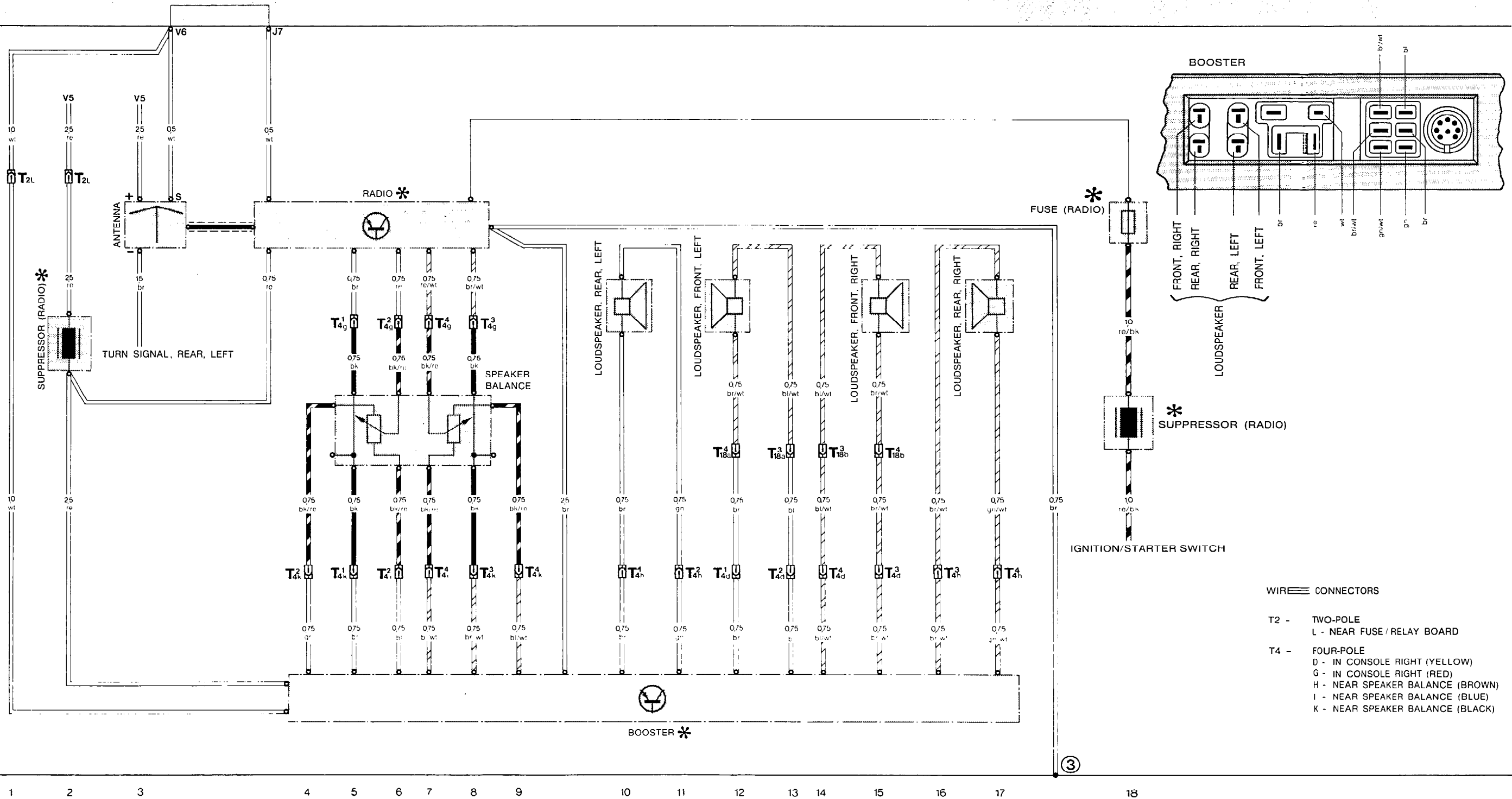


Additional Current Flow Diagram Type 928 USA Model 82

RADIO WITH BOOSTER

RADIO WITH BOOSTER

30	30
15	15
X	X
31	31

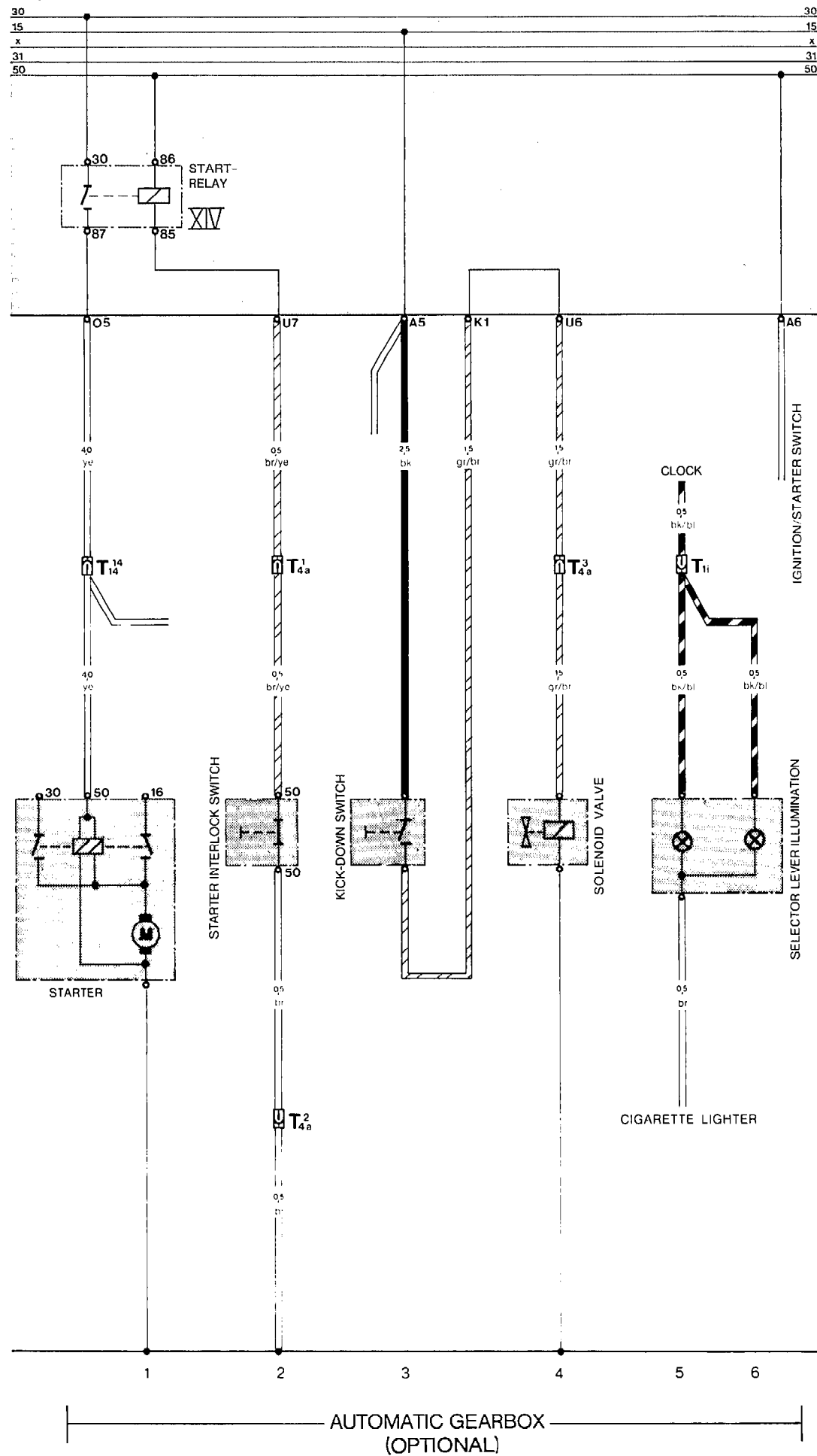


- WIRE CONNECTORS
- T2 - TWO-POLE
L - NEAR FUSE / RELAY BOARD
 - T4 - FOUR-POLE
D - IN CONSOLE RIGHT (YELLOW)
G - IN CONSOLE RIGHT (RED)
H - NEAR SPEAKER BALANCE (BROWN)
I - NEAR SPEAKER BALANCE (BLUE)
K - NEAR SPEAKER BALANCE (BLACK)

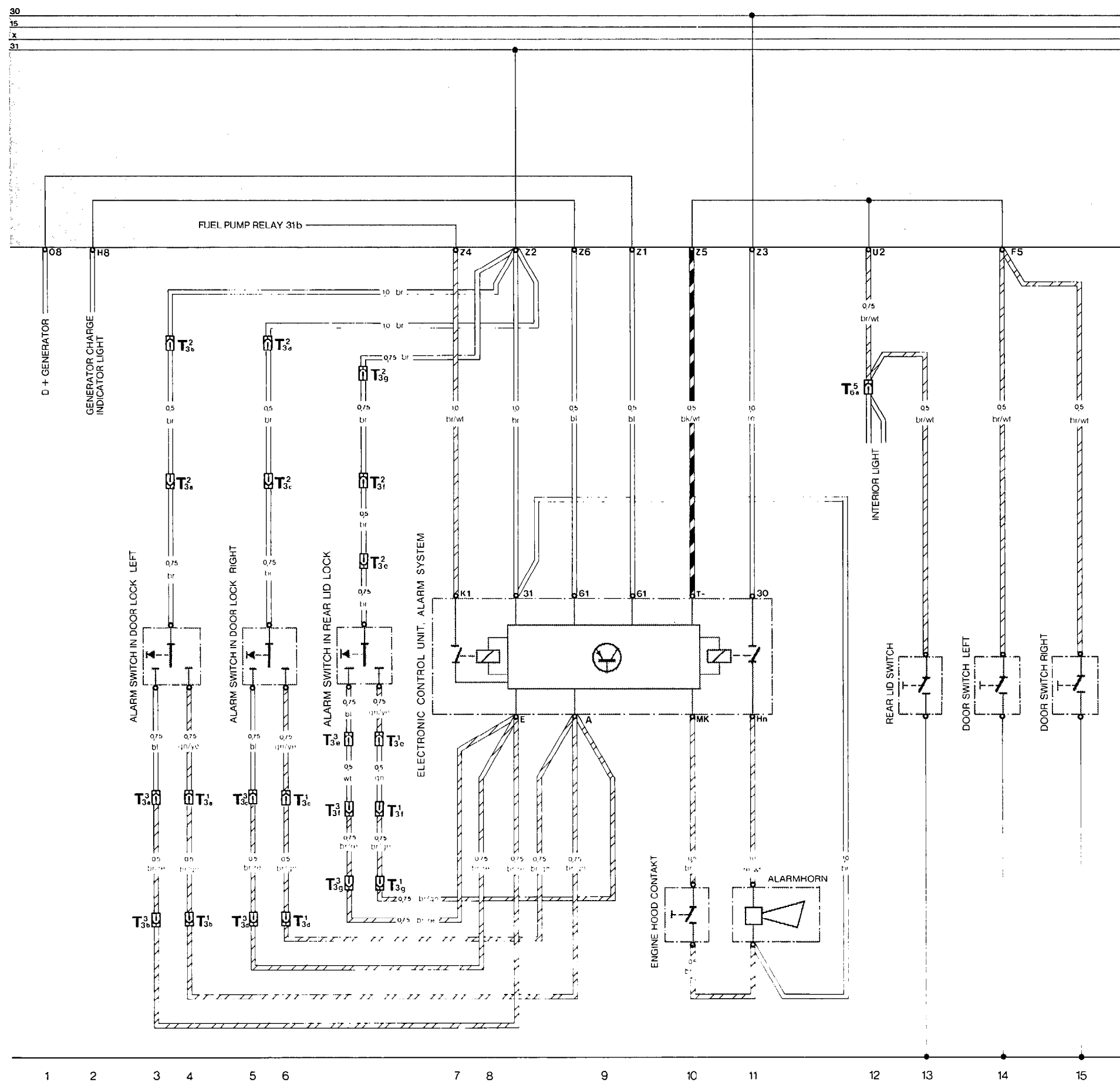
* OPTIONAL

Additional Current Flow Diagram

Type 928 USA Model 82 Automatic gearbox



Additional Current Flow Diagram
Type 928 USA
Alarm system



WIRE CONNECTORS

- T3 - THREE-POLE
- A - IN DOOR, DRIVER SIDE
- B - BELOW INSTRUMENT PANEL LEFT
- C - IN DOOR, PASSENGER SIDE
- D - BELOW INSTRUMENT PANEL RIGHT
- E - IN REAR LID
- F - IN REAR LID
- G - DOOR LOCK PILLAR, RIGHT